

Bathroom Solutions Planning Suggestions

- ① **MEASURE** the wall length where your cabinets will be installed.
- ② **DETERMINE** the distance from the center line of the existing plumbing to a side wall. A sink base cabinet will be centered there. If you intend to re-locate sinks, in many cases plumbing retrofit work will be required.
- ③ **CHOOSE** any grouping of cabinets, drawer banks, suspended drawer units, and linen cabinets that fits your personal needs and space.

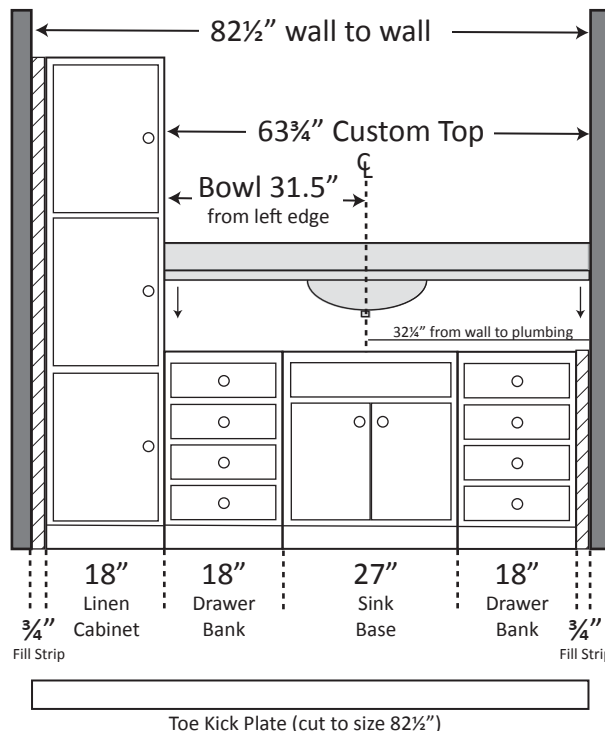
Example: (see drawing to the right)

Lets assume the length of your bathroom wall is 82½" long and the centerline from the faucet to the right wall is 32¼". You would like to have drawer space and a linen cabinet for extra storage. You select the SARATOGA series in Natural Beech. All Bathroom Solutions cabinetry are 21" deep. The rest is easy!

Mix and match component sizes until you come up with a total dimension that is the same as the wall measurement or one that is a few inches less.

- A Saratoga 27" wide 2 door cabinet is centered at the plumbing fixture. This will be your sink bowl location (S2721-NB SATIN/CHR).
- Two 18" wide drawer banks, 1 left, 1 right (S-DB1821-NB SATIN/CHR).
- An 18" wide linen cabinet hinged left (SLC1821-HL-NB SATIN/CHR).

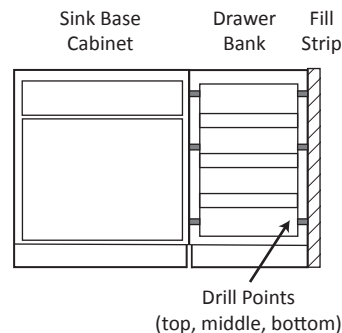
The total dimension of the above four components is 81". The difference of 1½" can be filled with a fill strip and a trim strip if necessary. An 84" long toe kick plate (TKP5-NB SATIN) would be cut to size and cover the seams of the adjoining cabinetry. A 63¾" custom top completes the set.



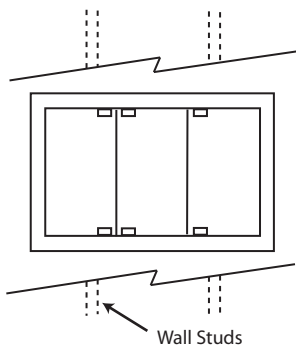
Installation Suggestions

- ① **CLAMP** cabinets together (protect the finish)
- ② **PRE-DRILL** 3/16" holes through face frame of drawer bank as indicated in drawing.
- ③ **SECURE** cabinets and fill strip together using #8 flathead wood screws 2½" long.

See INFO-1 for securing cabinets to wall.



Medicine Cabinet Installation Suggestions



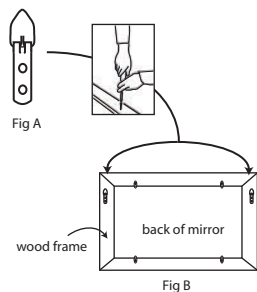
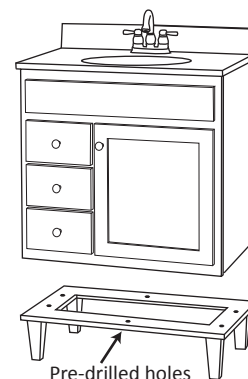
- ① **LOCATE** wall studs.
- ② **DRILL** 3/16" holes through the back of the medicine cabinet to align with wall studs.
- ③ **VERIFY** the medicine cabinet is level.
- ④ **INSERT** provided screws through holes and secure cabinet to wall studs.

Mirror Adjustments

Two people are needed for this job. To align mirrors, loosen set screws on pivot hinge at top and bottom of mirror door. Adjust the mirror and carefully re-tighten screws. Over tightening could break the mirror. Be mindful that mirrors may come loose during shipping. Periodically check hinge set screws for tightness.

Furniture Vanities

- ① **SECURE** or remove the doors and drawers to prevent them from falling out.
- ② **PLACE** the cabinet upside down on a protected surface on the floor. Two people will be needed for this job.
- ③ **SECURE** the pre-drilled leg platform to the bottom of cabinet flush with the back and even on both sides with screws provided.
- ④ **TURN** the vanity over and set it in place. Take extra care when flipping the cabinet over, do not drag the vanity across the floor. Legs may break if mis-handled or dropped.



Framed Beveled Mirrors:

- ① **PLACE** the frame face down on a soft, protected surface
- ② **POSITION** each D-ring hanger (Fig. A) on the back side of the mirror frame (Fig B) an equal distance down from the frame's top edge. It is recommended they be mounted to the side frames and not the top frame.
- ③ **MARK** the center of the holes and then pre-drill for all screw holes to avoid splitting the wood. Take care not to penetrate through to the front surface of the frame.
- ④ **INSTALL** the D-ring hangers to the frame with the attached screws.
- ⑤ **HANG** the frame on appropriately sized hooks or wall anchors