

TIBURON



Shown: Cherry Maple (CM)

* Colors may vary

AVAILABLE FINISHES See store samples for actual colors

Wood Species	Stain Colors
BEECH	Natural Beech (NB) Light Beech (LB) Cherry Beech (CB) Spice Beech (SB) Dark Beech (DB)
MAPLE	Natural Maple (NM) Light Maple (LM) Blush Maple (BM) Cherry Maple (CM) Spice Maple (SM) Dark Maple (DM)
CHERRY	Light Cherry (LC) Cherry Cherry (CC) Spice Cherry (SC) Dark Cherry (DC)

All wood finishes are available in Satin, Semi-gloss, or Gloss clear coat lacquer. Unfinished option can be specified.

HARDWARE OPTIONS



CHR
(Polished Chrome)



BRASS
(Polished Brass)



ORB
(Oil Rubbed Bronze)



PS-CHR
(Premiere Satin Chrome)



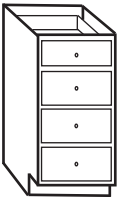
S-CHR
(Satin Chrome)

No drill option can be specified (doors and drawers will be manufactured with no holes drilled for knobs)

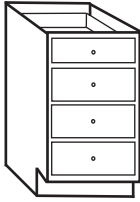


All vanities are 21" deep by 33 3/4" high

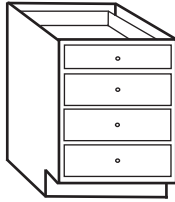
Drawer Banks



12"w

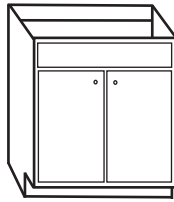


15"w

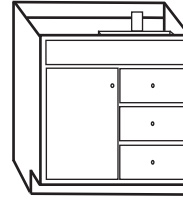


18"w

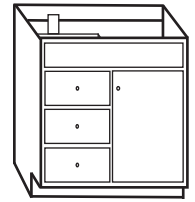
24" Wide Vanities



2 doors

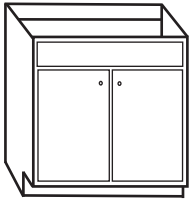


1 door, 3 drawers right



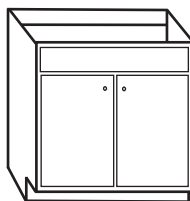
1 door, 3 drawers left

27" Wide Vanity

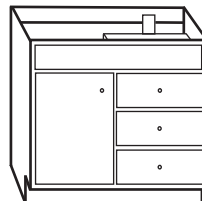


2 doors

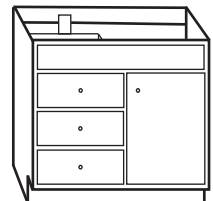
30" Wide Vanities



2 doors

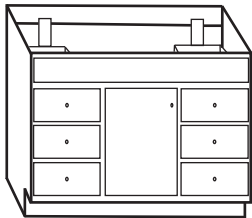


1 door, 3 drawers right

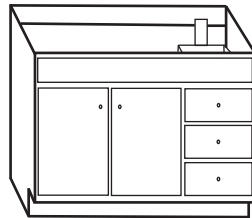


1 door, 3 drawers left

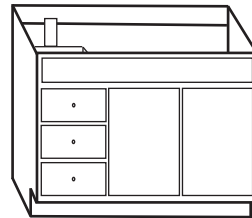
36" Wide Vanities



1 door, 3 drawers left, 3 right

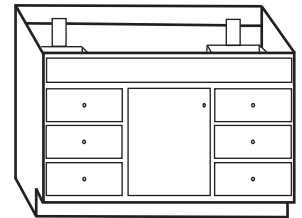


2 doors, 3 drawers right



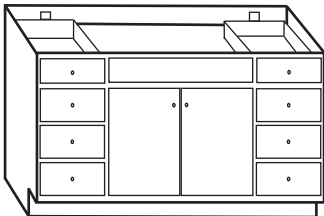
2 doors, 3 drawers left

42" Wide Vanity



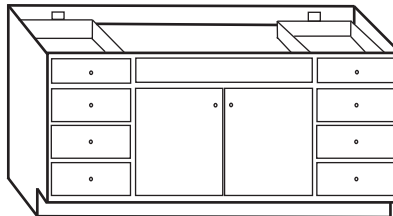
1 door, 3 drawers left, 3 right

48" Wide Vanity

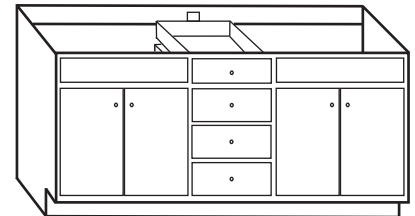


2 doors, 4 drawers left, 4 right

60" Wide Vanities



2 doors, 4 drawers left, 4 right

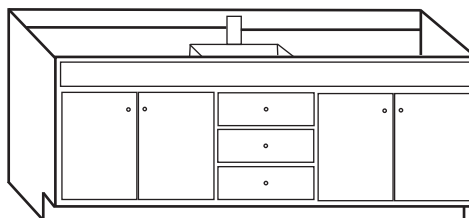


2 doors left, 4 center drawers, 2 doors right

72" Wide Vanities

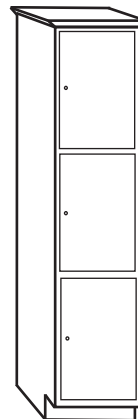


2 doors, 3 drawers, left, 3 right

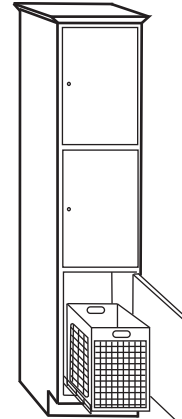


2 doors left, 3 center drawers, 2 doors right

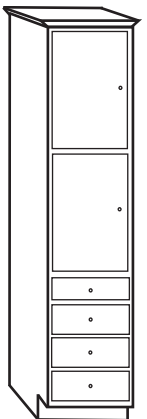
Linen Cabinets



3 doors



Hamper



4 drawers

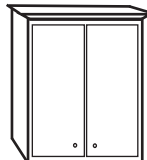
Inquire about matching medicine cabinets, light bars, framed beveled mirrors, and trim accessories such as toe kick plates, fill strips, trim strips, and base boards.

Wall Cabinets

Over-the John



Toilet-Topper



21"W x 8"D x 30 3/4"H

visit www.jensonvanities.com

18"W x 21"D x 78 3/4"H
(specify hinge left or right)